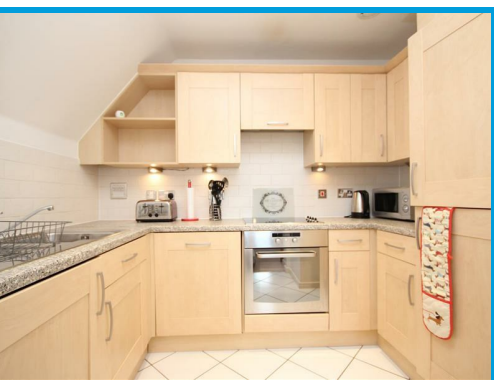




The Courtyard, Stoke Road Guildford, Surrey GU1 4HP

£1,675 PCM

Located in the heart of Guildford town centre, this stunning two double bedroom apartment is presented in excellent order and boasts two bathrooms and allocated parking



Description

This stunning two double bedroom top floor apartment is located just moments from Guildford town centre and is presented to a beautiful standard throughout.

The property comprises an entrance hall with access to large reception room, modern kitchen with appliances, master bedroom with en suite shower room, a further double bedroom and family bathroom with shower over bath.

The property further benefits from off street allocated parking.

Both Guildford mainline station and London Road station are within a short distance and the A3 is within easy access.

